

How to correctly print out your foot measurement form



For Mac OS X & Safari users



▶ [Click here if you're using a different browser or operating system](#)

1.

Select a print option.

▶ [PAGE 1](#)

2.

Print out and check the foot measure form.

▶ [PAGE 3 or 4](#)

3.

Please follow our detailed measurement instructions.

▶ [PAGE 2](#)

4.

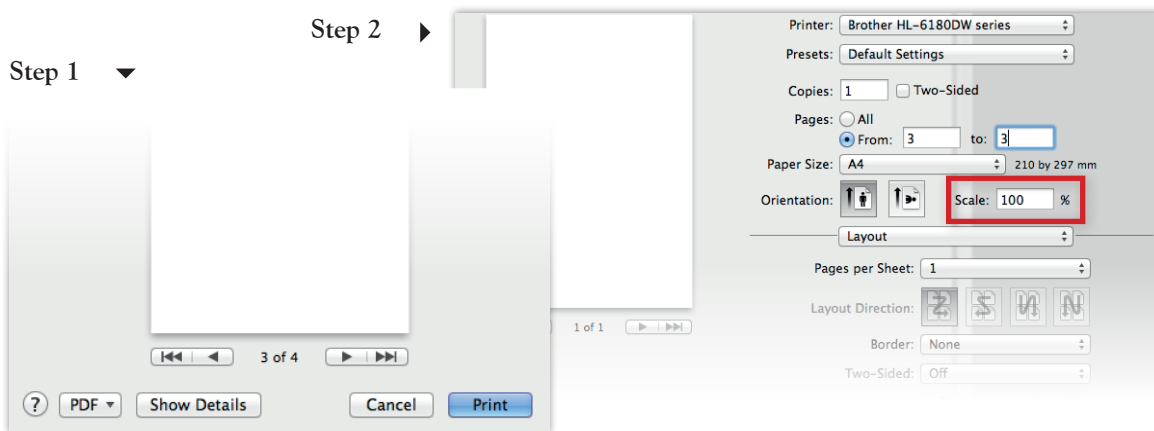
Find your proper shoe size!

1. Select a print option



Method 1

Printing from Safari

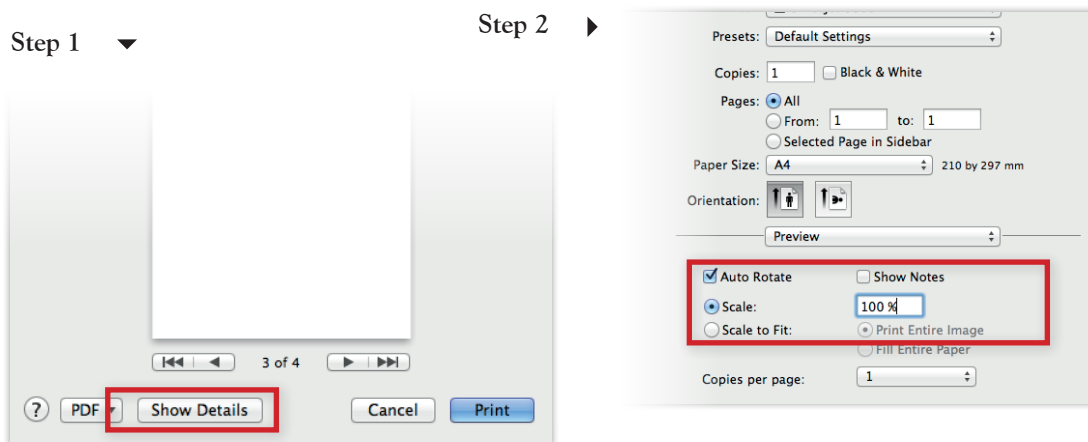


OR



Method 2

Printing from Mac-Preview

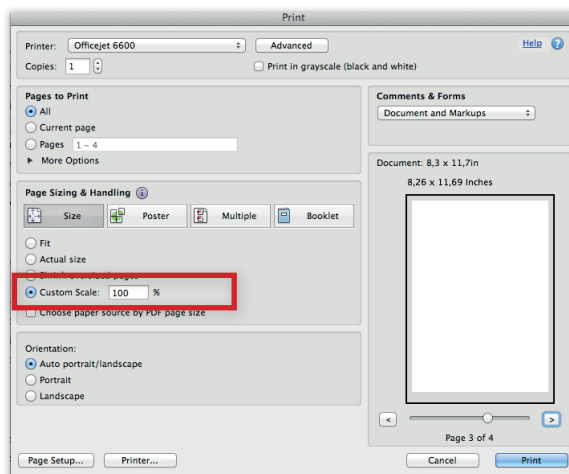


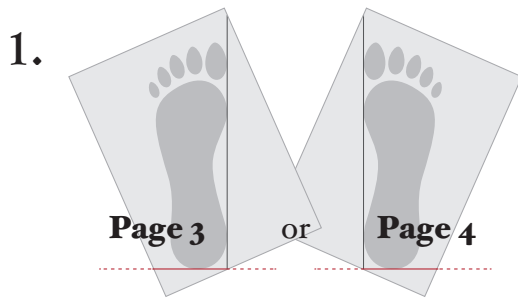
OR



Method 3

Printing from Acrobat Reader





1. First, decide whether you want to measure your right or your left foot (page 3 or 4). Unsure which one to choose? We recommend measuring both feet – the bigger one will serve as a benchmark.

2. Fold the lower right-hand edge (or lower left-hand edge, depending on which foot you're measuring) of the measurement form on the dotted line. If you prefer, you can also cut along the line.

3. To obtain accurate results, line up the form against a straight wall or doorframe, as shown in the diagram here.

TIP

Over the course of the day your shoe size may vary because your feet may swell. It is entirely possible that your feet will be a different size in the morning than in the evening. Please measure your feet in the afternoon.

4. Position your foot on the measurement form. Your heel should lie along the red line, while the inside of your foot should follow the vertical foot length line, as shown in the diagram to the left.

TIP

The thickness of your socks can influence the measurement results. Please wear a pair of socks that you intend on wearing with your new Goodyear-welted shoes.

5. Use a pencil to mark the form at the top of your big toe, as well as at the ball of your little toe.

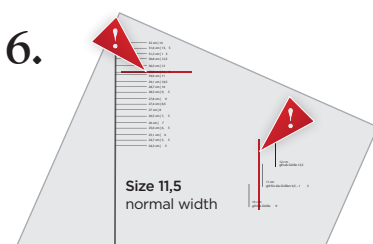
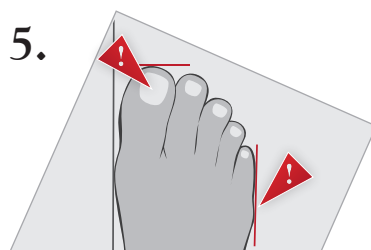
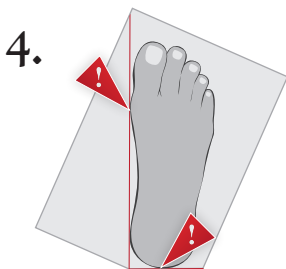
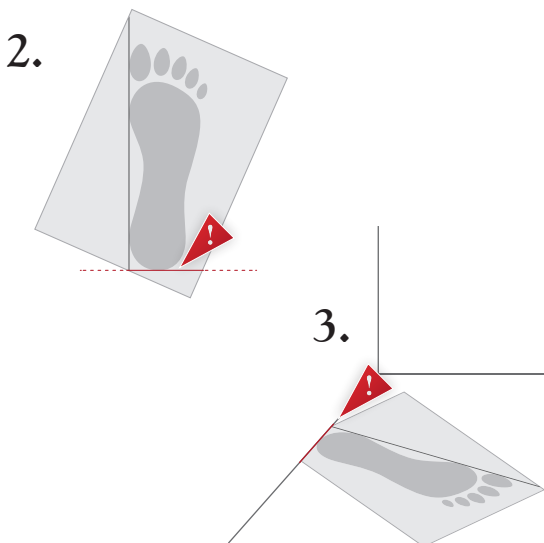
TIP

Although you can measure your foot by yourself, it can be helpful to get some assistance in order to avoid making any measurement errors. If there isn't anybody on hand, please make sure to keep your foot steady while you mark the form.

6. After you have lifted your foot off the form, you can use the marks you made to easily look up your correct SHOEPASSION.com size. If the ball of your little toe extends further than the maximum width of your shoe size, please choose a model with an extra-wide shoe last.

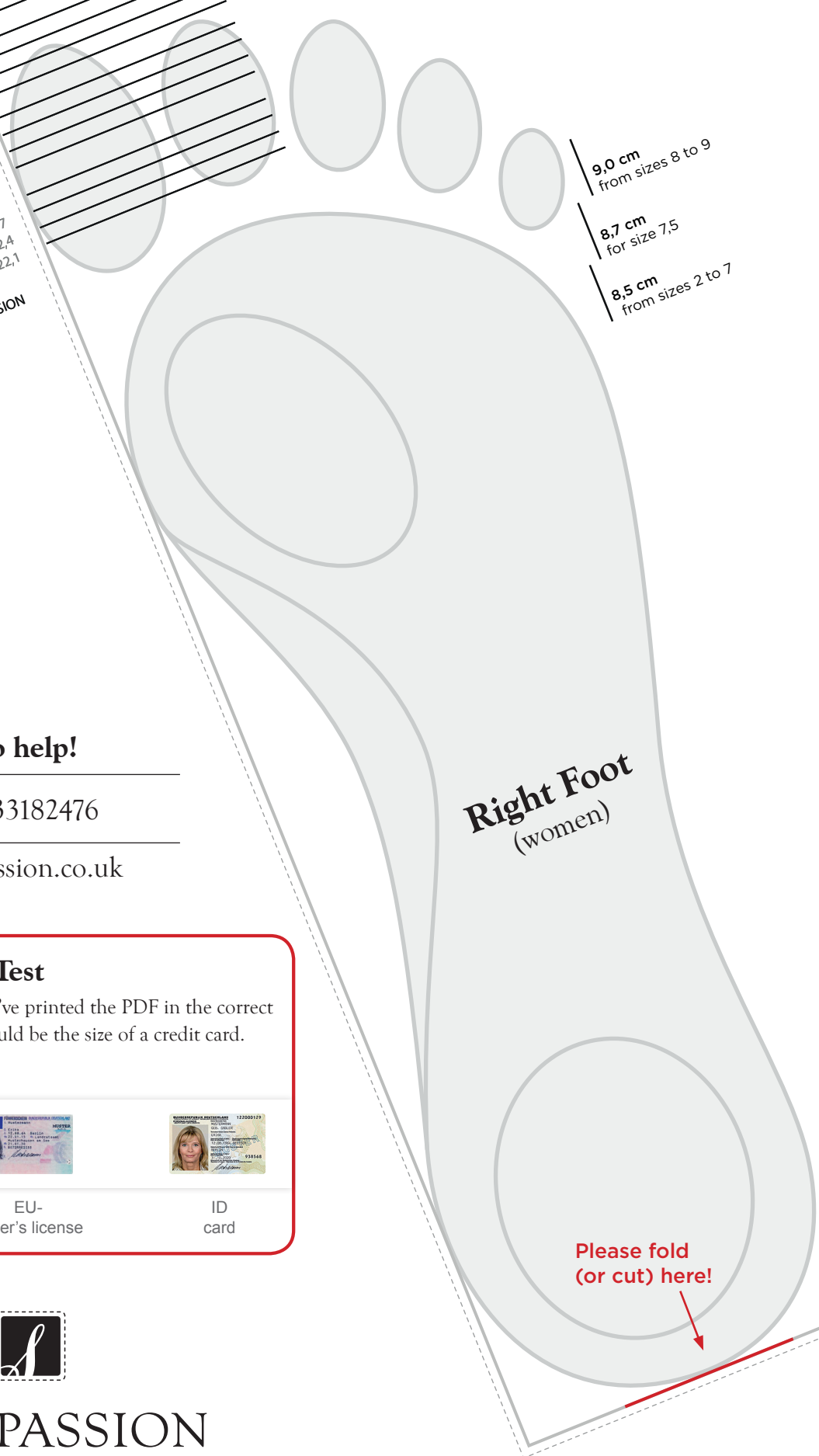
TIP

If you fall between two shoe sizes, please choose the larger size of the two. If your feet are different sizes, please select the larger size of the two.



| EU | UK | CM |
|------|-----|------|
| 42 | 9 | 26,7 |
| 41,5 | 8,5 | 26,4 |
| 41 | 8 | 26,1 |
| 40,5 | 7,5 | 25,7 |
| 40 | 7 | 25,4 |
| 39,5 | 6,5 | 25,1 |
| 39 | 6 | 24,8 |
| 38,5 | 5,5 | 24,4 |
| 38 | 5 | 24,1 |
| 37,5 | 4,5 | 23,8 |
| 37 | 4 | 23,5 |
| 36,5 | 3,5 | 23 |
| 36 | 3 | 22,7 |
| 35,5 | 2,5 | 22,4 |
| 35 | 2 | 22,1 |

SHOEPASSION



9,0 cm
from sizes 8 to 9

8,7 cm
for size 7,5

8,5 cm
from sizes 2 to 7

Right Foot
(women)

**Please fold
(or cut) here!**

Any questions?
We're happy to help!



0044 20 33182476

service@shoepassion.co.uk

Print-out Size Test

Want to make sure you've printed the PDF in the correct size? This rectangle should be the size of a credit card.

Possible cards:



Credit or
Debit Card



EU-
driver's license



ID
card



SHOEPASSION
— .COM —

9,0 cm
from sizes 8 to 9

8,7 cm
for size 7,5

8,5 cm
from sizes 2 to 7

Left foot
(Women)

Please fold
(or cut) here!

| CM | UK | EU |
|------|-----|------|
| 26,7 | 9 | 42 |
| 26,4 | 8,5 | 41,5 |
| 26,1 | 8 | 41 |
| 25,7 | 7,5 | 40,5 |
| 25,4 | 7 | 40 |
| 25,1 | 6,5 | 39,5 |
| 24,8 | 6 | 39 |
| 24,4 | 5,5 | 38,5 |
| 24,1 | 5 | 38 |
| 23,8 | 4,5 | 37,5 |
| 23,5 | 4 | 37 |
| 23 | 3,5 | 36,5 |
| 22,7 | 3 | 36 |
| 22,4 | 2,5 | 35,5 |
| 22,1 | 2 | 35 |

Questions?

We're happy to help!



0044 20 33182476

service@shoepassion.co.uk

Print-out Size Test

Want to make sure you've printed the PDF in the correct size? This rectangle should be the size of a credit card.

Possible cards:



Credit or
Debit Card



EU-
driver's license



ID
card



SHOEPASSION
COM